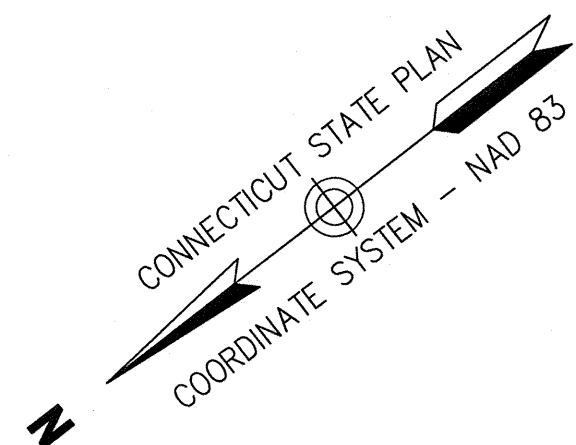
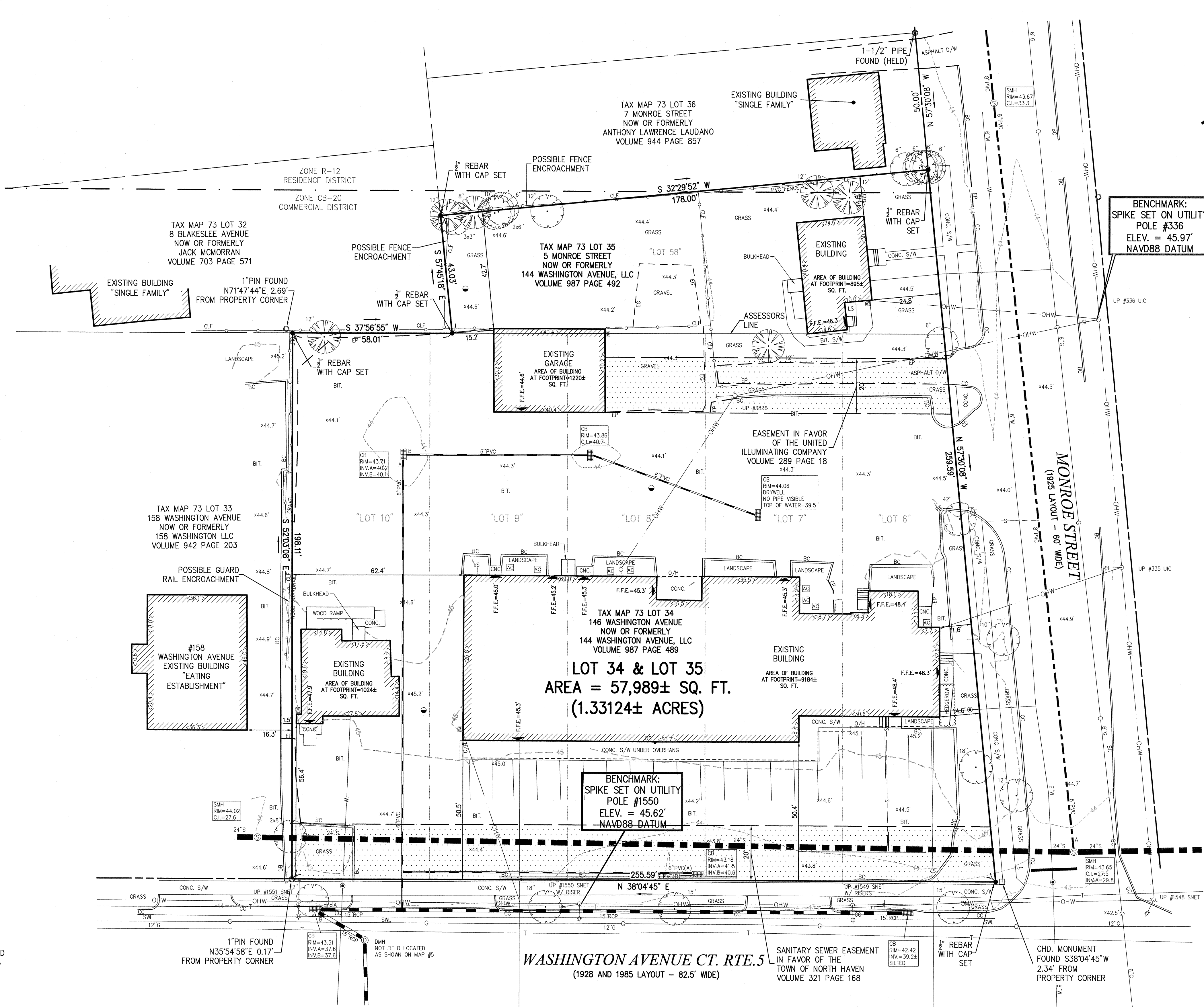
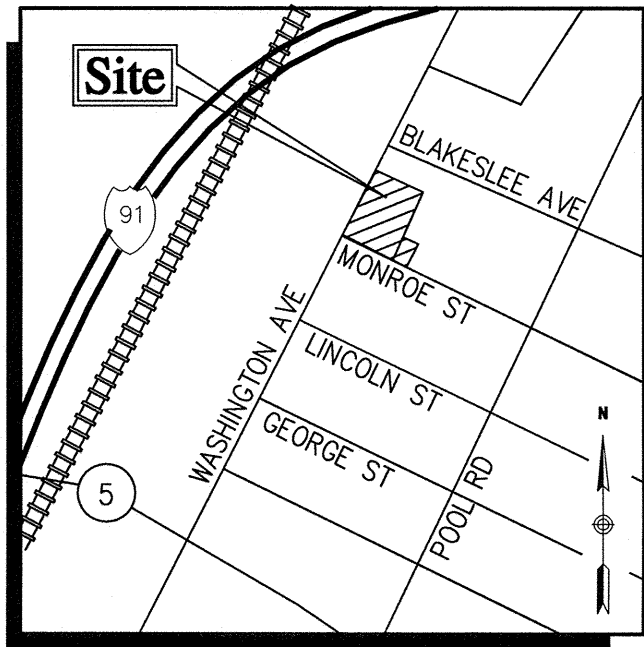


Legend

---	EDGE OF PAVEMENT
---	EDGE OF GRAVEL/LANDSCAPE
---	BUILDING OVERHANG
---	CURB
---	WOOD GUARD RAIL
---	CHAIN LINK FENCE
---	WOOD/PVC FENCE
---	UNDERGROUND DRAINAGE LINE
---	UNDERGROUND SEWER LINE
---	OVERHEAD WIRE
---	UNDERGROUND ELECTRIC LINE
---	UNDERGROUND GAS LINE
---	UNDERGROUND WATER LINE
---	UNDERGROUND TELEPHONE LINE
---	UNDERGROUND CABLE LINE
---	UNDERGROUND FIBER OPTIC LINE
---	PROPERTY LINE
---	EASEMENT LINE
---	ZONE LINE
---	STATE HIGHWAY LINE
---	CITY/TOWN LAYOUT LINE
---	ASSESSORS PARCEL LINE
---	CATCH BASIN
---	CATCH BASIN
---	DOWNSPOUT
---	DRAIN MANHOLE
---	SEWER MANHOLE
---	WATER GATE
---	SIAMESE CONNECTION
---	FIRE HYDRANT
---	GAS GATE
---	STREET SIGN
---	LIGHT POLE
---	UTILITY POLE
---	UTILITY POLE W/LIGHT
---	GUY WIRE
---	BOLLARD/POST
---	MONITORING WELL
---	SPOT ELEVATION
---	AIR CONDITIONING
---	ELECTRIC METER
---	FIRE ALARM
---	GAS METER
---	HAND HOLE
---	MAILBOX
---	WATER METER
---	SHRUB
---	DECIDUOUS TREE
---	EVERGREEN TREE
---	DRILL HOLE FOUND
---	IRON PIN/REBAR FOUND
---	MONUMENT FOUND
---	REBAR SET
---	CONCRETE CURB
---	BITUMINOUS CURB
---	EDGE OF PAVEMENT
---	BITUMINOUS PAVEMENT
---	CONC. CONCRETE
---	LANDSCAPE
---	SIDEWALK
---	CENTER INVERT
---	UTILITY POLE
---	REINFORCED CONCRETE PIPE
---	POLYVINYLCHLORIDE PIPE
---	CHAIN LINK FENCE
---	CATCH BASIN
---	MANHOLE
---	DRAIN MANHOLE
---	SEWER MANHOLE
---	OVERHEAD LINE
---	RIM ELEVATION
---	INVERT ELEVATION
---	ELEVATION
---	FINISH FLOOR ELEVATION
---	OVERHEAD
---	TYP.



100 Great Meadow Road
Suite 200
Wethersfield, CT 06109
860.807.4300



Locus Map
(NOT TO SCALE)

Tax Map 73 Lot 34 & Lot 35

146 Washington Ave. & 5 Monroe St.
North Haven, Connecticut

No.	Revision	Date	Appr.

Designed by JDD Checked by CCD
Issued for _____ Date _____

Client

September 9, 2019

Map References

- MAP TITLED "POPULAR ACRES - NORTH HAVEN CONN. OWNED AND DEVELOPED BY SUBURBAN REALTY CO.", MAP SCALE 1"=60', MAP DATED JULY 25, 1925 AND IS ON FILE WITH THE NORTH HAVEN TOWN CLERK.
- MAP TITLED "MAP SHOWING SECTION OF POPULAR ACRES, DEVELOPED BY ANIELLO PRETE, LOTS 1 TO 8 INCLUSIVE.", MAP SCALE 1"=60', MAP DATED FEBRUARY 5, 1948 AND IS ON FILE WITH THE NORTH HAVEN TOWN CLERK.
- MAP TITLED "PROPERTY OF DINO AND VELMA DELL'ORO, WASHINGTON AVE, NORTH HAVEN, CT.", MAP SCALE 1"=60', MAP DATED SEPTEMBER 25, 1976 AND IS ON FILE WITH THE NORTH HAVEN TOWN CLERK.
- MAP TITLED "TOWN OF NORTH HAVEN - MAP SHOWING EASEMENT ACQUIRED FROM GLORIA CARAFA ET AL, TRUSTEES BY THE STATE OF CONNECTICUT DEPARTMENT OF TRANSPORTATION.", MAP SCALE 1"=10', MAP DATED MAY 2015.
- MAP TITLED "STATE OF CONNECTICUT DEPARTMENT OF TRANSPORTATION - WASHINGTON AVENUE @ BLAKESLEE IN THE TOWN OF NORTH HAVEN-PROJECT NO. 170-3231.", MAP SCALE 1"=40', MAP DATE JUNE 2014.
- MAP TITLED "COLVEST-NORTH HAVEN, LLC. PROPERTY LINE PLAN-SHEET 1 OF 1.", MAP SCALE 1"=30', MAP DATED NOVEMBER 12, 1999.
- MAP TITLED "RIGHT OF WAY MAP-TOWN OF NORTH HAVEN-WASHINGTON AVENUE FROM BROADWAY NORTHERLY TO INTERSTATE 91, CONNECTICUT DEPARTMENT OF TRANSPORTATION #100-15, SHEET 4 OF 4.", MAP SCALE 1"=40', MAP DATED AUGUST 1985.
- MAP TITLED "PROPOSED CUMBERLAND FARMS CONVENIENCE STORE WITH GAS 146 WASHINGTON AVENUE CT. RTE. 5 NORTH HAVEN, CONNECTICUT" MAP SCALE 1"=20' MAP DATED JULY 10, 2017.

General Notes

THE SURVEY MARKERS DEPICTED ON THIS PLAN ARE BASED UPON AN ACTUAL FIELD SURVEY CONDUCTED BY VHB IN JUNE 2017. REBAR WITH CAP SET AT VARIOUS PROPERTY CORNERS ON AUGUST 30, 2019.

THE EXISTING CONDITIONS DEPICTED ON THIS PLAN ARE BASED UPON AN ACTUAL ON-THE-GROUND INSTRUMENT SURVEY PERFORMED BY VHB ON JUNE 19, 2017 AND JUNE 20, 2017.

THE LOCATIONS OF EXISTING UNDERGROUND UTILITIES DEPICTED ON THIS PLAN ARE BASED ON FIELD OBSERVATIONS AND INFORMATION OF RECORD. THEY ARE NOT WARRANTED TO BE EXACTLY LOCATED NOR IS IT WARRANTED THAT ALL UNDERGROUND UTILITIES OR OTHER STRUCTURES ARE DEPICTED ON THIS PLAN.

HORIZONTAL DATUM AND NORTH AZIMUTH DEPICTED HEREON REFER TO THE CONNECTICUT STATE PLANE COORDINATE SYSTEM - NAD 83. ELEVATIONS AND CONTOURS DEPICTED HEREON REFER TO THE NORTH AMERICAN VERTICAL DATUM OF 1988 (NAVD 88). BOTH DATUMS WERE COMPUTED AND MEASURED USING AVERAGED REAL TIME NETWORK (RTN) GPS SOLUTION.

THE AREA DEPICTED ON THIS MAP LIES WITHIN ZONE "X" AS DEPICTED ON THE FLOOD INSURANCE RATE MAP FOR NEW HAVEN COUNTY, CONNECTICUT, PANEL 0313 OF 0635, MAP NUMBER 09009C0313KB, EFFECTIVE DATE MAY 26, 2017.

TO FIDELITY NATIONAL TITLE INSURANCE COMPANY:

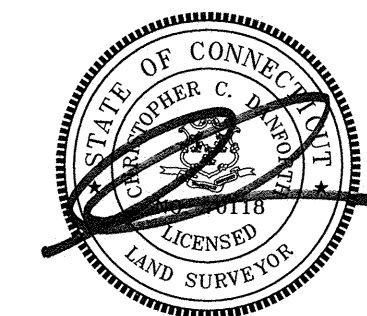
THIS SURVEY AND MAP HAS BEEN PREPARED PURSUANT TO THE REGULATIONS OF CONNECTICUT STATE AGENCIES SECTIONS 20-300b-1 THROUGH 20-300b-20 AND THE "STANDARDS FOR SURVEYS AND MAPS IN THE STATE OF CONNECTICUT" AS ADOPTED BY THE CONNECTICUT ASSOCIATION OF LAND SURVEYORS, INC. ON SEPTEMBER 26, 1996.

THIS IS A PROPERTY SURVEY CONFORMING TO A HORIZONTAL CLASS A-2 ACCURACY AND A TOPOGRAPHIC SURVEY CONFORMING TO A TOPOGRAPHICAL ACCURACY STANDARD CLASS T-2. THE BOUNDARY DETERMINATION IS A RESURVEY.

TO MY KNOWLEDGE AND BELIEF THIS MAP IS SUBSTANTIALLY CORRECT AS NOTED HEREON. THIS PLAN IS NOT VALID WITHOUT A LIVE SIGNATURE AND EMBOSSED SEAL.

CHRISTOPHER C. DANFORTH, L.S. #70118

DATE



Property Survey & Topographic Survey

Drawing Title

Drawing Number

Sv-1

Sheet 1 of 1

Project Number
42552.00